



FOR LEASE

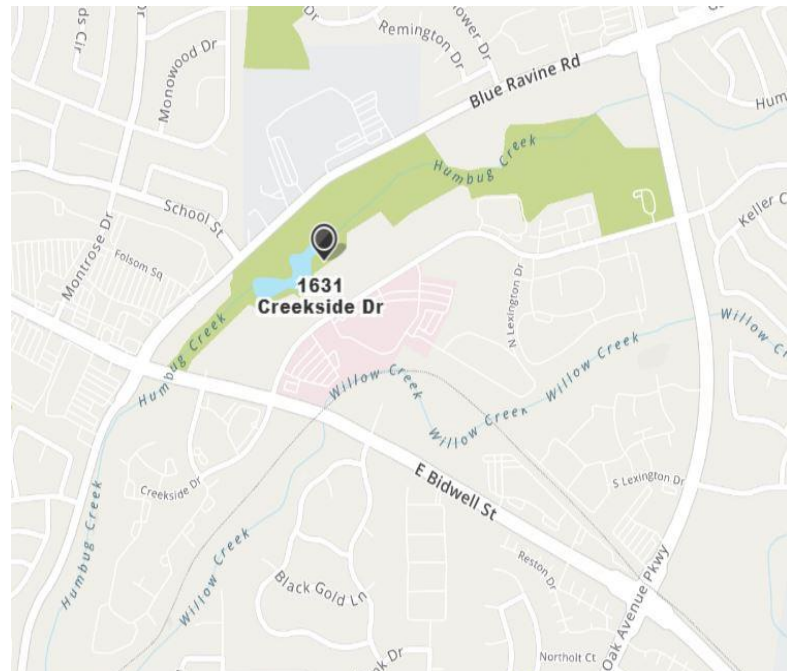
OFFICE SPACE AVAILABLE

Creskide Office Park
1631 Creskide Dr., Suite 101
Folsom, CA 95630



PROPERTY HIGHLIGHTS

- Suite 101+/- 1,667SF
- Lease Rate \$2.25 RSF MG
- TI Allowance negotiable
- The walls in "work" area are not to scale
- Suite is currently vacant
- Centrally located in Folsom's Medical District across from Dignity Health Mercy Hospital
- Direct access to Folsom Bike Trail
- Convenient access to numerous restaurants, shops and services



For more information, click [HERE](#)

BOB KUHLMAN
KW Commercial
Cell: 916.947.5060
bob@bobkuhl.com
DRE # 00606862

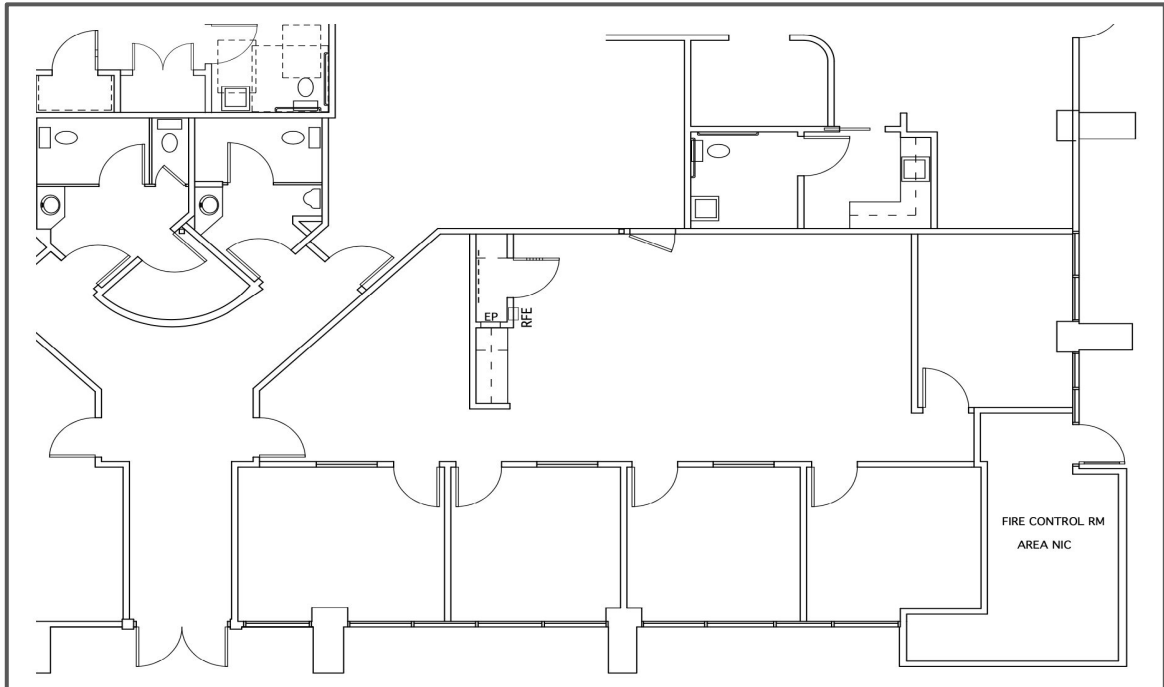
GRETCHEN TOBIN
KW Commercial
Cell: 916.425.7711
gretchentobin@kw.com
DRE # 00937965

www.bobkuhl.com

KW Commercial | 548 Gibson Drive, Ste 200 | Roseville, CA 95768 | 916.788.8800 | License #1272617

The information contained herein was obtained from third parties, and it has not been independently verified by the real estate brokers. Buyers/tenants should have the experts of their choice inspect the property and information. Real estate brokers are not qualified to act as or select experts with respect to legal, tax, environmental, building construction, soils-drainage or other such matters.

Creekside Office Park
1631 Creekside Dr., Suite 101
Folsom, CA



Existing

Available Units	Office SF	Lease Rate / SF
1631 Creekside Dr. Suite 101	+/- 1,667 RSF	\$2.25 MG

For more information,
 please contact:

BOB KUHL
 Cell: 916.947.5060
bob@bobkuhl.com
 DRE Lic. # 00606862

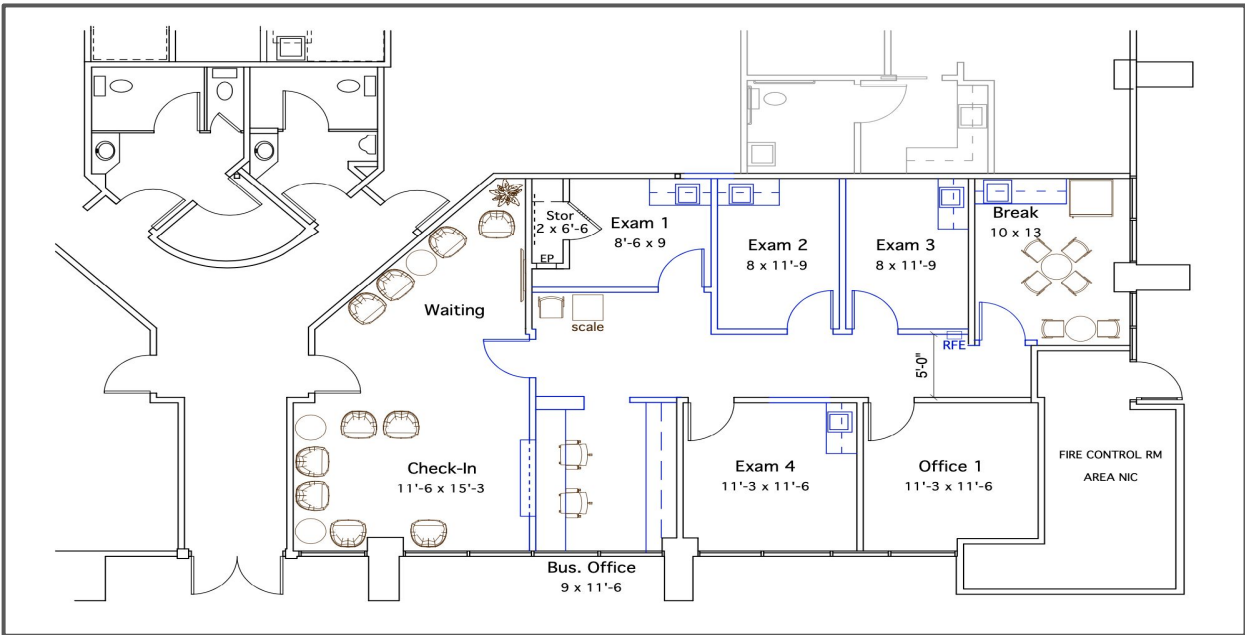
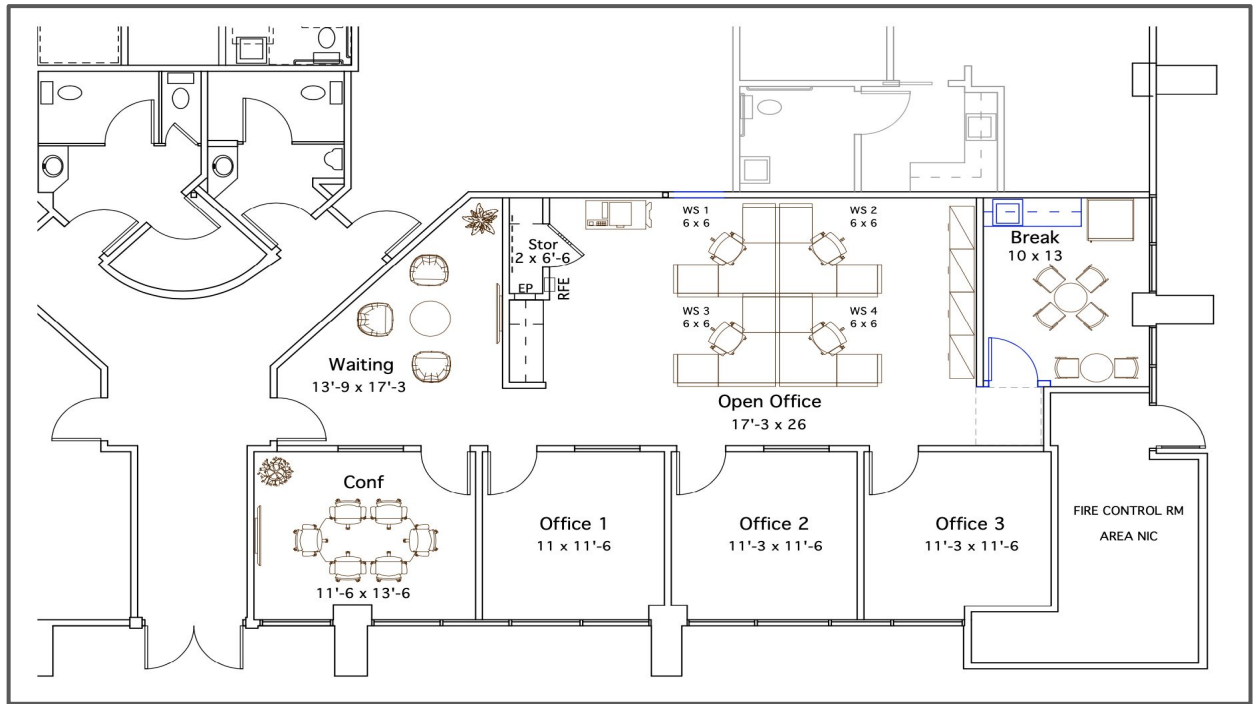
GRETCHEN TOBIN
 Cell: 916.425.7711
gretchentobin@kw.com
 DRE License # 00937965

www.bobkuhl.com

KW Commercial | 548 Gibson Drive, Ste 200 | Roseville, CA 95768 | 916.788.8800 | License #1272617

The information contained herein was obtained from third parties, and it has not been independently verified by the real estate brokers. Buyers/tenants should have the experts of their choice inspect the property and information. Real estate brokers are not qualified to act as or select experts with respect to legal, tax, environmental, building construction, soils-drainage or other such matters.

**PSP1
Office**



**PSP3
Medical**

For more information,
 please contact:

BOB KUHL
 Cell: 916.947.5060
bob@bobkuhl.com
 DRE Lic. # 00606862

GRETCHEN TOBIN
 Cell: 916.425.7711
gretchentobin@kw.com
 DRE License # 00937965

www.bobkuhl.com

The information contained herein was obtained from third parties, and it has not been independently verified by the real estate brokers. Buyers/tenants should have the experts of their choice inspect the property and information. Real estate brokers are not qualified to act as or select experts with respect to legal, tax, environmental, building construction, soils-drainage or other such matters.